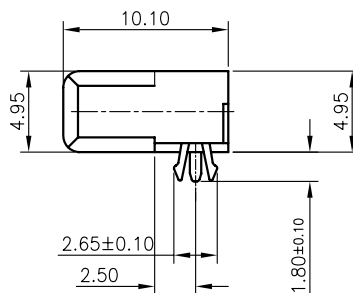
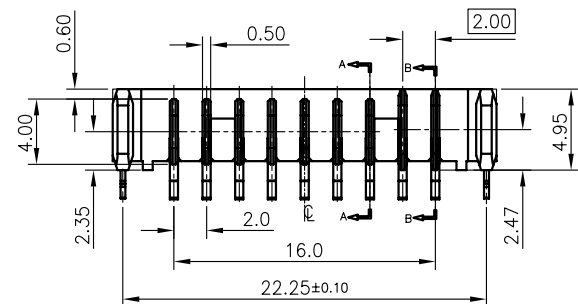


SECTION A-A



NOTES:

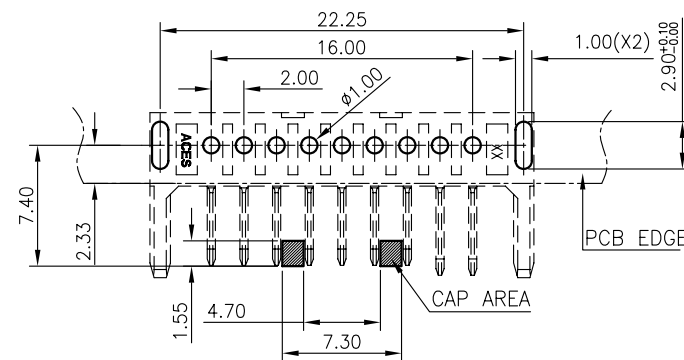
1. MATERIAL:
  - 1.1 HOUSING: LCP, HIGH TEMP, UL94V-0.
  - 1.2 CONTACT: COPPER ALLOY.
  - 1.3 FORK: COPPER ALLOY.
2. FINISH:
  - 2.1 CONTACT:
    - 1: GOLD FLASH PLATED ON CONTACT AND SOLDER TAIL AREA, NICKEL UNDERPLATING OVERALL.
  - 2.2 FORK:
    - MATTE TIN PLATED OVERALL, NICKEL UNDERPLATING OVERALL.
3. REFLOW SOLDER CAPABLE TO 260°C PER ACES SPEC.
4. SPEC. PLS REFER TO PS-54954-XXXXX-XXX
5. PACKAGE PLS REFER TO 54972-XXXXX-XX-TRP OR 54972-XXXXX-01-TRP
6. PART NUMBER

54972-XXX X X-XXX

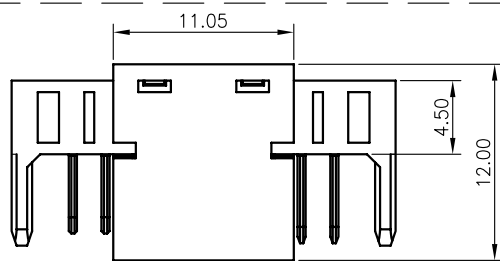
CKTS	XXX	Housing Color	PACKAGE
	001	Black	54972-xxxxx-xx-TRP
	002	Black	54972-xxxxx-01-TRP

PACKING: 0: TAPE & REEL; 7: TAPE & REEL WITH COVER

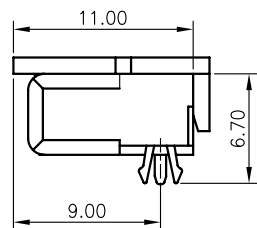
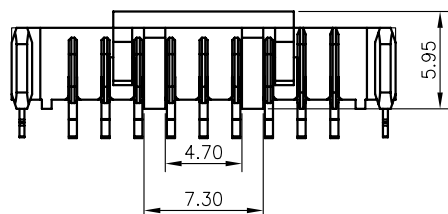
PLATING: 1: GOLD FLASH PLATED ON CONTACT AND SOLDER TAIL AREA



RECOMMENDED P.C.B. LAYOUT  
TOLERANCE ±0.05 mm



WITH COVER



一般公差 <b>TOLERANCES</b> X ±0.5 XX ±0.15 X ±0.25 XXX ±0.1 ANGLES ±2°		<b>宏致電子股份有限公司</b> <b>Aces Electronics Co., Ltd.</b>	
檢驗尺寸標示 SYMBOLS ⊕ ⊗ INDICATE CLASSIFICATION DIMENSION ⊕ MARK IS CRITICAL DIM. ⊗ MARK IS MAJOR DIM.	品名 (TITLE) 2.00mm Battery Conn. Male DIP R/A Type H=4.95	製圖 (DR) 16/11/04 ZHUWEI	5
	圖號 (DWG NO.) 54972-XXXXX-XXX	審核 (CHKD) BRAVE	
表面處理 (FINISH)	比例 (SCALE) 4:1	單位 (UNITS) mm	核准 (APPD) FRANK
		張數 (SHEET) 1 OF 1	SIZE A4
			REV A